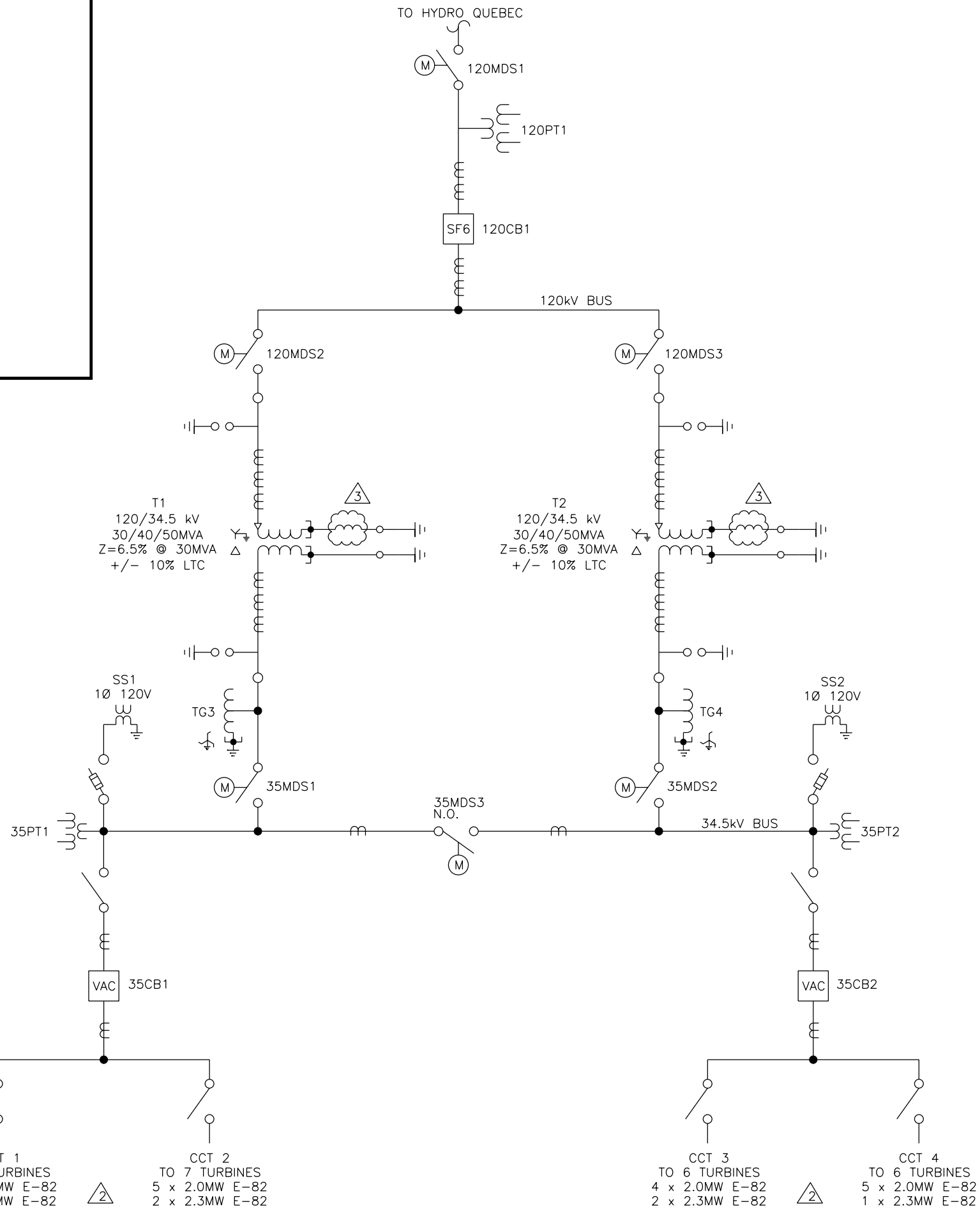
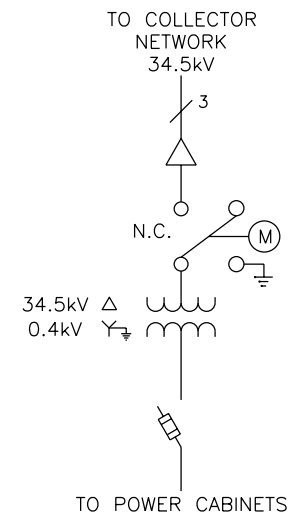


ANNEXE E

Diagramme unifilaire préliminaire

ENERCON E-82 2.0/2.3MW



NOTES:

- 1. PT AND CT CONFIGURATION AND NUMBER TO BE CONFIRMED BY DETAILED DESIGN
- 2. TURBINE LAYOUT BEING FINALIZED. TURBINES SELECTED AS 19 ENERCON E-82 2.0MW FTQ AND 6 ENERCON E-82 2.3MW. PERMITTING TO CONFIRM LAYOUT IN SUMMER 2011. FEEDER CONFIGURATION WILL BE UPDATED BASED ON FINAL TURBINE LAYOUT EXPECTED IN APRIL 2011.
- 3. REQUIREMENT FOR NEUTRAL GROUNDING REACTOR TO BE CONFIRMED.

REFERENCE NUMBER	DRAWING TITLE
	REFERENCE DRAWINGS

NO.	DATE	DESCRIPTION	DWN	CHD	ENG
C	11-02-15	ADDED CTS, PTS & UPDATED TRANSFORMER CONFIG.	RS	SSF	
B	11-02-02	UPDATED SUBSTATION CONFIGURATION	RS	SSF	

PRELIMINARY – NOT FOR CONSTRUCTION
FOR INFORMATION ONLY

DESIGN BY S. FLEMING	LOCATION TransAlta ST. VALENTIN
DATE 11-02-02	
DRAWN BY R. SANTOS	DESCRIPTION/TITLE PRELIMINARY ELECTRICAL SINGLE LINE DIAGRAM
DATE 11-02-02	
CHECKED BY	
DATE	
APPROVED BY	VENDOR/CONSULTANT COMPANY VENDOR/CONSULTANT DWG NUMBER
DATE	
SCALE NTS	VENDOR REF NO./PROJECT No TAU DRAWING NUMBER REVISION SK-4 C
SHT 1 OF 1	PLEASE REFER TO DOC FOR LATEST RELEASED REVISION